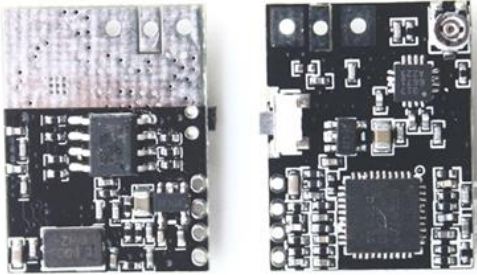


Model : TX5810-100



Output Power : 10mw – 100mw (adjustable Output Power with variable resistor on it) **DEFAULT 50MW**

Weight : 1.3 gram (only Tx module)

Weight : 1.9 gram (with Clover Leaf antenna)

Dimensions : 17 * 22mm

Voltage : 3.5V – 5V

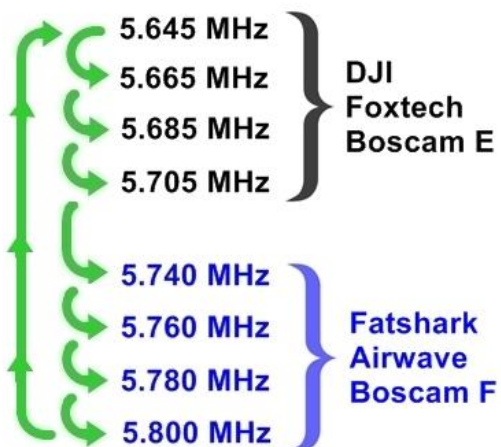
Current : 150mAh (min) – 280mAh (max)

Pushbutton channel selection (Last channel memory)

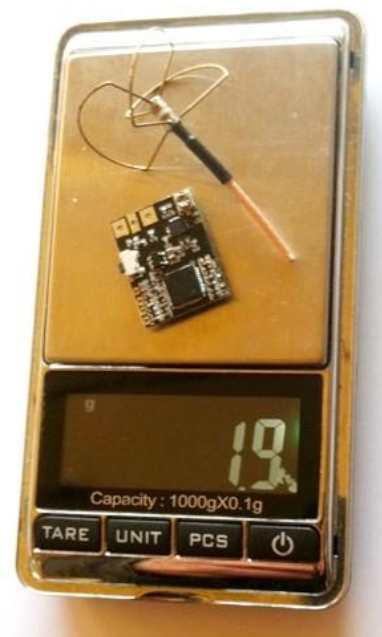
Frequency Band : Dual band = Band E & Band F

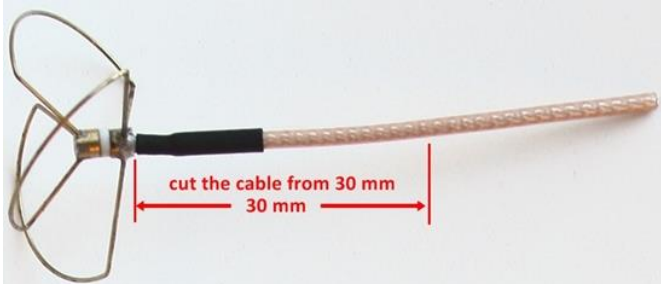
Frequencies :

- a) 5.645 MHz
- b) 5.665 MHz
- c) 5.685 MHz
- d) 5.705 MHz
- e) 5.740 MHz
- f) 5.760 Mhz
- g) 5.780 MHz
- h) 5.800 MHz

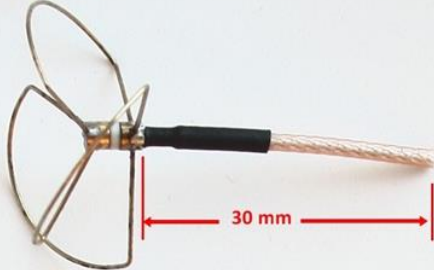


PUSHBUTTON CHANNEL SELECTION

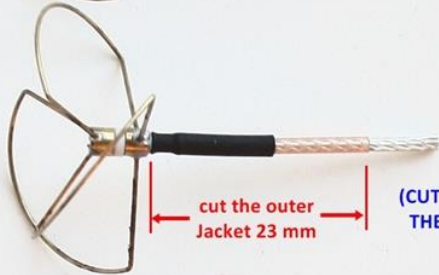




cut the cable from 30 mm
30 mm

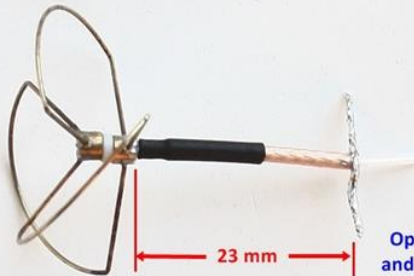


30 mm



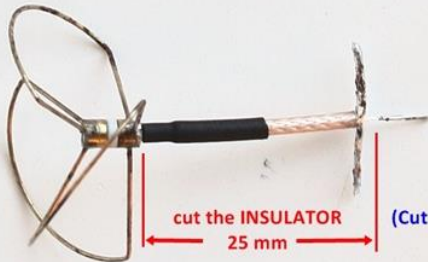
cut the outer
Jacket 23 mm

(CUT CAREFULLY, DON'T CUT
THE BRAID SHIELD'S WIRES)



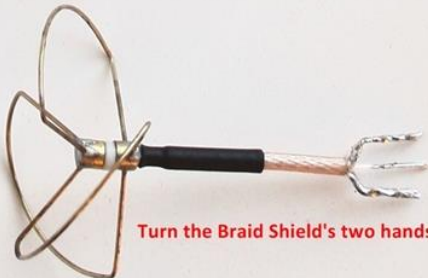
23 mm

Open the Braid Shield's wires
and solder the wires both sides

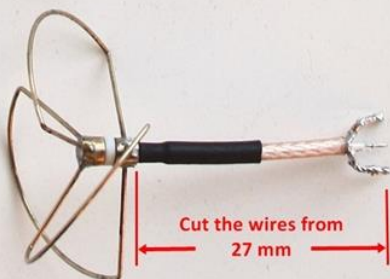


cut the INSULATOR
25 mm

(Cut the Insulator carefully, don't cut conductor wires
and solder the conductor wires like photo)



Turn the Braid Shield's two hands like photo



Cut the wires from
27 mm

CL antenna is ready for soldering

Coaxial Cable Structure Figure

